



8
**Biennial
Internacional
de Paisatge**

**International Biennial
of Landscape Architecture**

**September 2014
Barcelona
25, 26 & 27 september**

VIII European Biennial of Landscape Architecture

ETSAB - Escola Tècnica Superior
d'Arquitectura de Barcelona
Avenida Diagonal, 649
08028 Barcelona - Spain
T: +34.93 5520842; +34. 93 4016411
Contact: Anna Cavallero

biennial.paisatge@upc.edu
<http://www.coac.net/landscape>

A LANDSCAPE FOR YOU

TECHNICAL DOSSIER

Title of the project	School of Landscape Architecture - Building and Landscape Concept Design
Authors	Andrea Baus
Title of the course	Architectural Design- 2nd year od Landscape Architecture, elective course
Academic year	2013 / 2014
Teaching staff	prof. art. Stanko Stergaršek, architect / Iva Rechner Dika, PhD landscape architect
Department / Section / Program of belonging	Department of Ornamental Plants, Landscape Architecture and Garden Art
University / School	University of Zagreb / Faculty of Agriculture / School of Landscape Architecture - Zagreb

Short description of the project

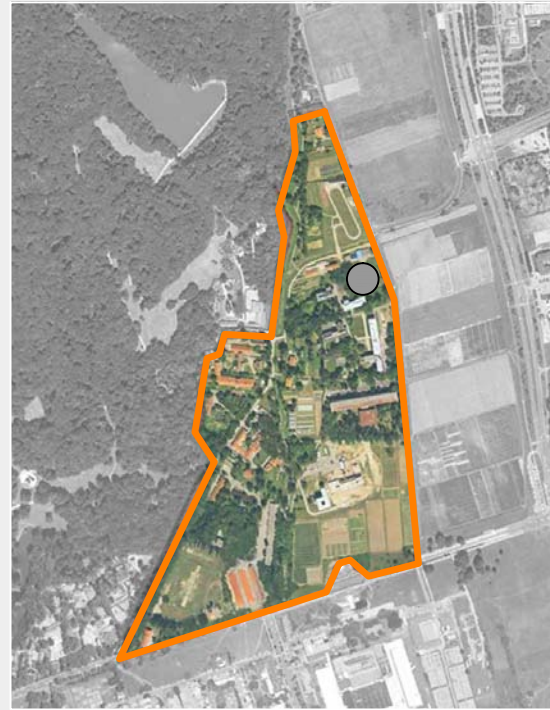
The site for school of landscape architecture building is located within the pavilion complex of Faculty of Agriculture in Zagreb, Croatia. The school building is a detached object covering 2700 square meters consisting of a ground floor (partially underground), and the first floor. The school is placed diagonally in relation to the surrounding buildings with the goal of preserving the existing trees. The idea was to connect the outer and inner space, and thus the building blends with the environment without imposing. The building is inspired by Fibonnaci type golden spiral, which is reflected on the ramp form as the dominating element. The ramp symbolizes the students' constantly expanding knowledge and leads to the library on the top of the building as a knowledge spring. Other than its symbolic role, the ramp can be used for a student hang-out and break spot or even for sledging during the winter. A greater part of the ramp is in shade which extends its use throughout the warmer months.

South of the building, the main pathway leads to a formal gathering area filled with various decorative plants, benches and an atmospheric water element, and an entrance square containing rock sculptures that can be used for sitting. North of the building, there are bleachers intended to be used for outdoor lecturing and are accessed from the classrooms. There is another stepping stone pathway whose role is artistic as well as functional. Additional amenities include a shaded grill area and a parking lot with tree rows.

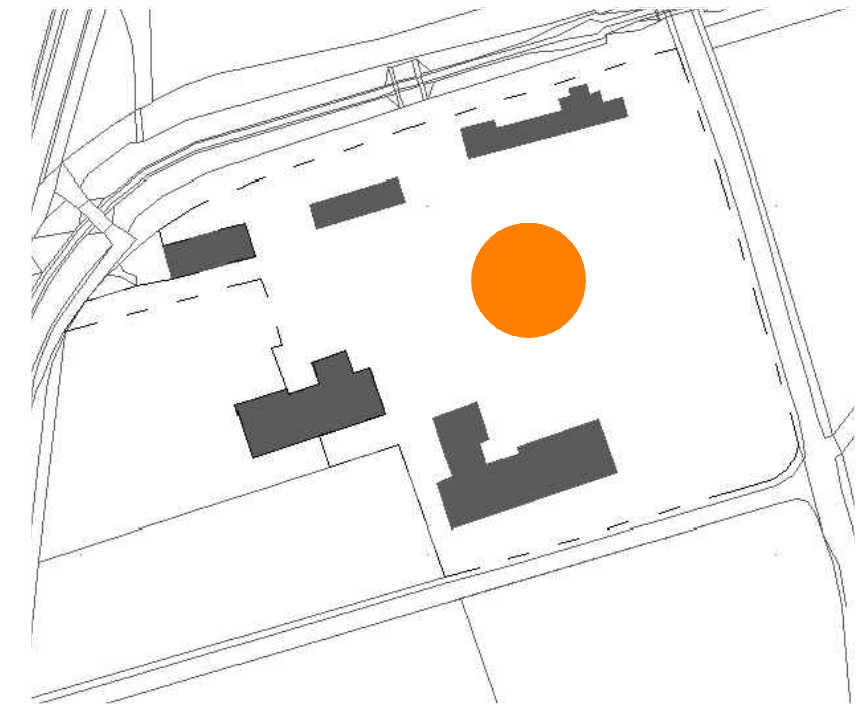
PLAN OF LOCATION



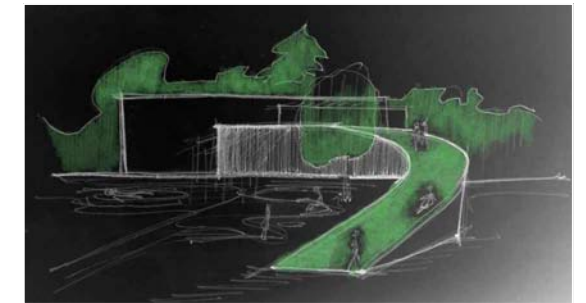
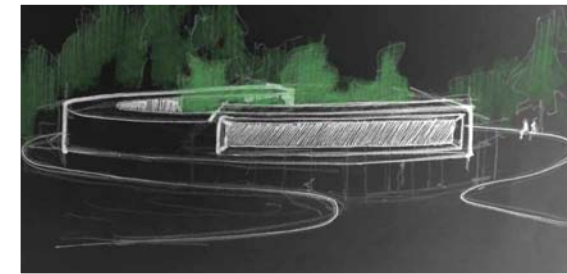
MAP OF PAVILLION COMPLEX OF FACULTY OF AGRICULTURE AND FORESTRY



SITE PLAN



SKETCHES



GOOGLE EARTH



PHOTO A

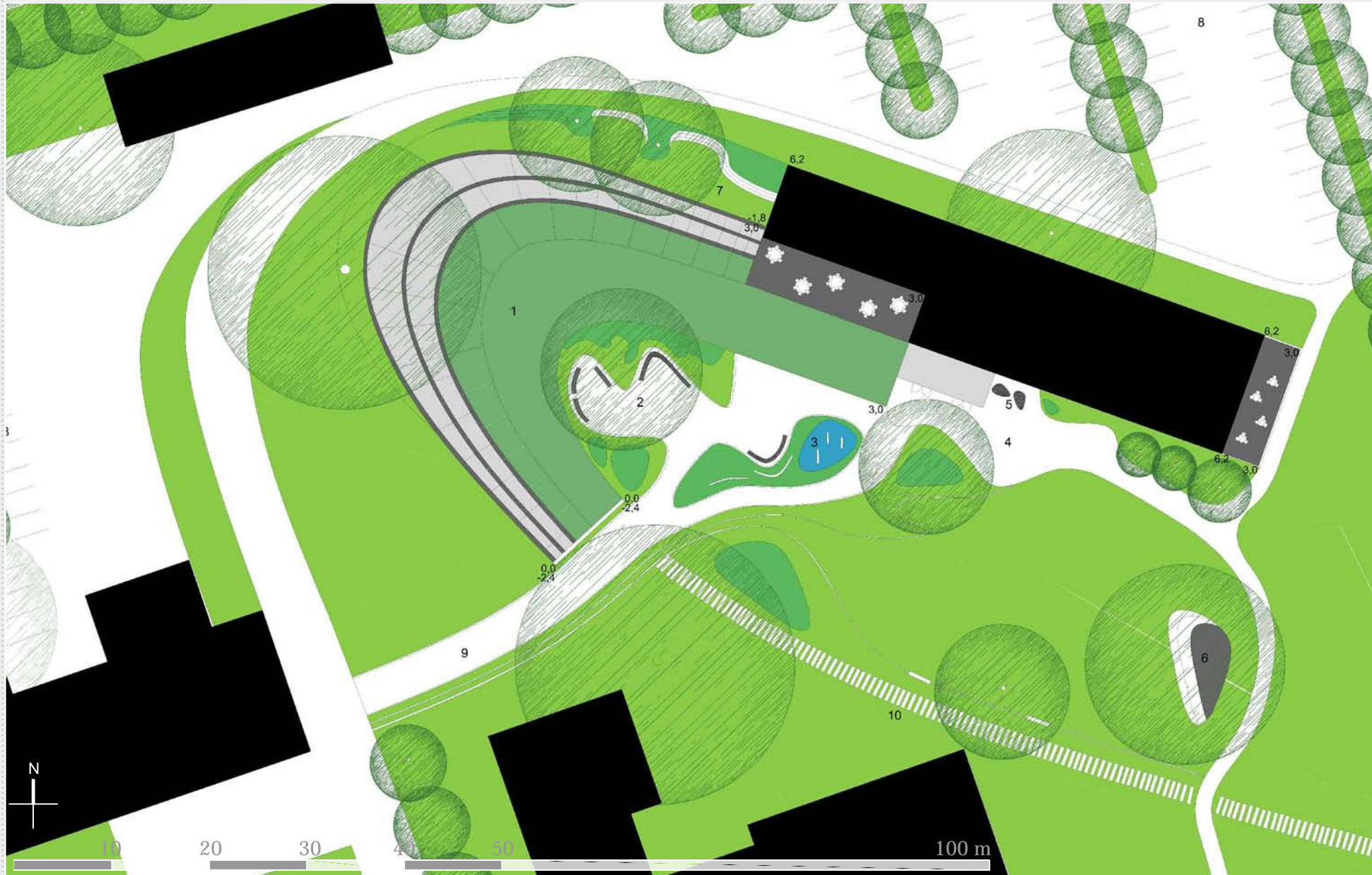


PHOTO B

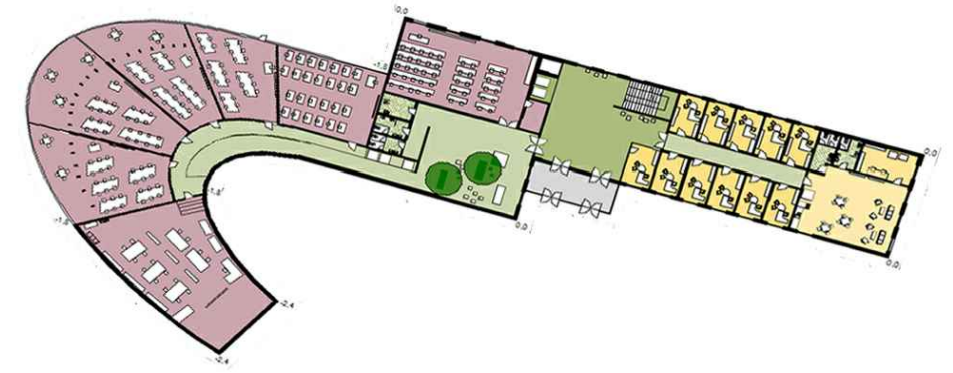


Croatia
University of Zagreb / Faculty of Agriculture / School of Landscape Architecture - Zagreb
2013 / 2014
School of Landscape Architecture - Building and Landscape Concept Design
Andrea Baus

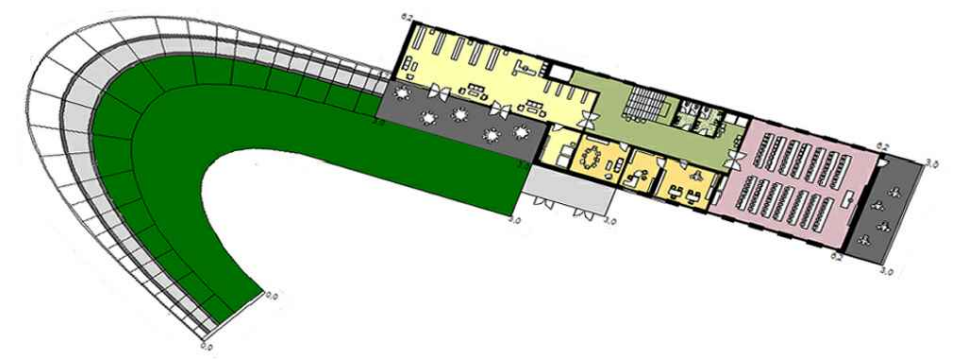
PLANS



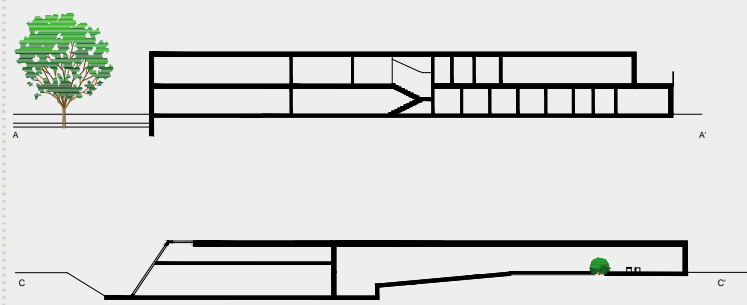
GROUND FLOOR PLAN



FIRST FLOOR PLAN



SECTIONS



FACADES



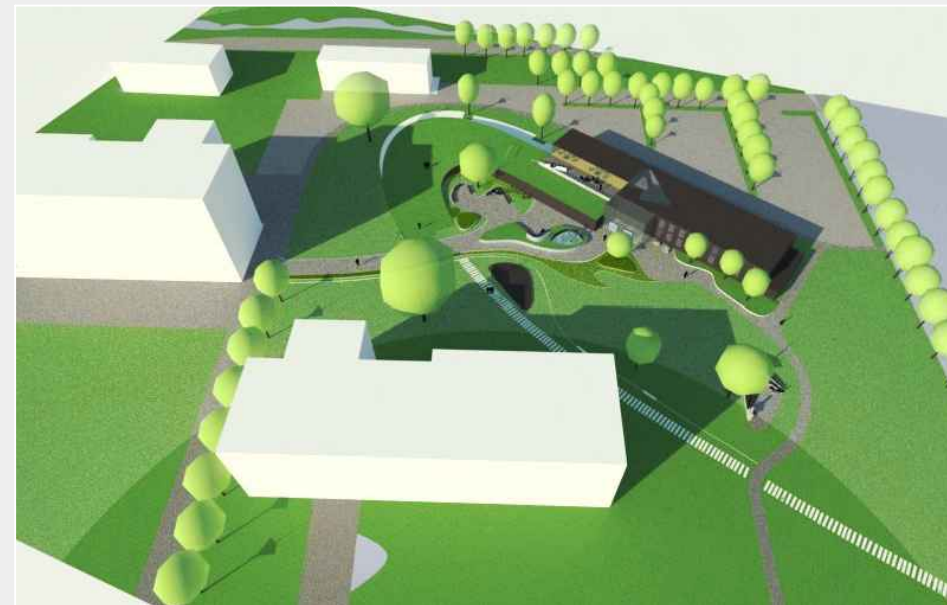
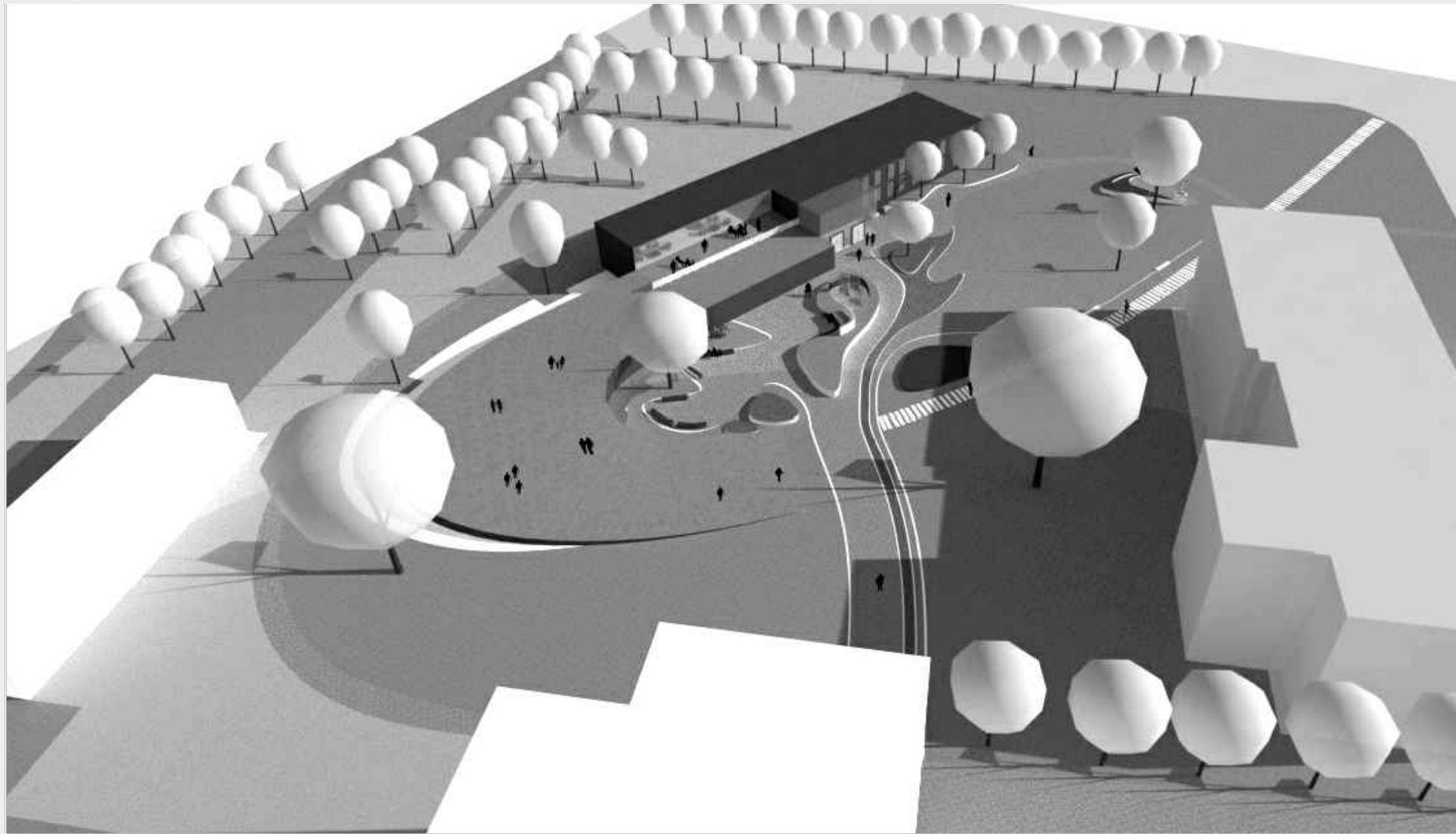
KEY:

- CLASSROOMS
- OFFICES/LIBRARY
- HALLWAY
- SANITARY FACILITIES
- TERRACES



Croatia
 University of Zagreb / Faculty of Agriculture / **School of Landscape Architecture - Zagreb**
 2013 / 2014
School of Landscape Architecture - Building and Landscape Concept Design
Andrea Baus

RENDERS



Croatia
University of Zagreb / Faculty of Agriculture / **School of Landscape Architecture - Zagreb**
2013 / 2014
School of Landscape Architecture - Building and Landscape Concept Design
Andrea Baus



International Biennial
of Landscape Architecture

September 2014
Barcelona
25, 26 & 27 september

VIII European Biennial of Landscape Architecture

ETSAB - Escola Tècnica Superior
d'Arquitectura de Barcelona
Avenida Diagonal, 649
08028 Barcelona - Spain
T: +34.93 5520842; +34. 93 4016411
Contact: Anna Cavallero

biennial.paisatge@upc.edu
<http://www.coac.net/landscape>

A LANDSCAPE FOR YOU

TECHNICAL DOSSIER

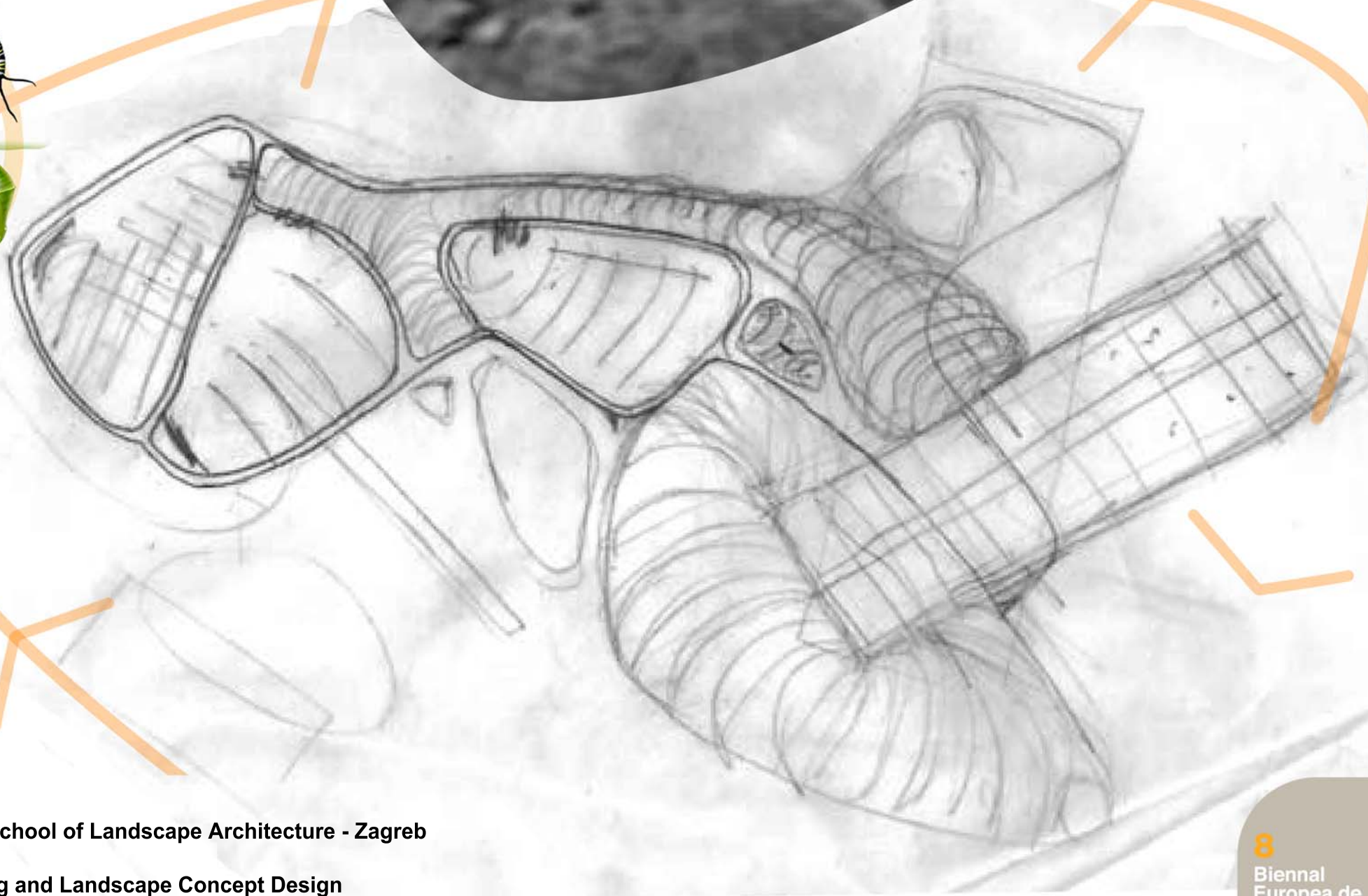
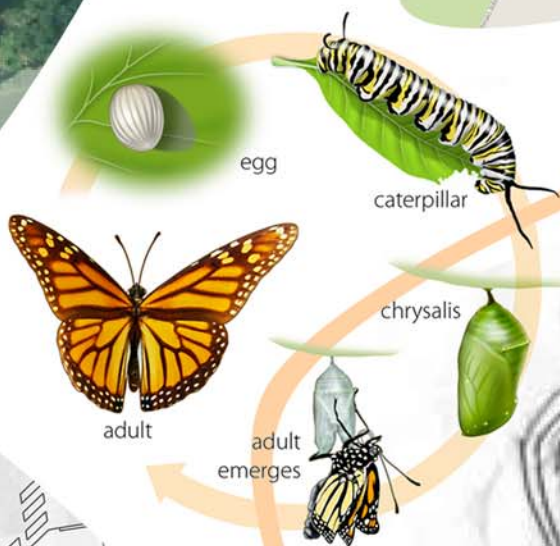
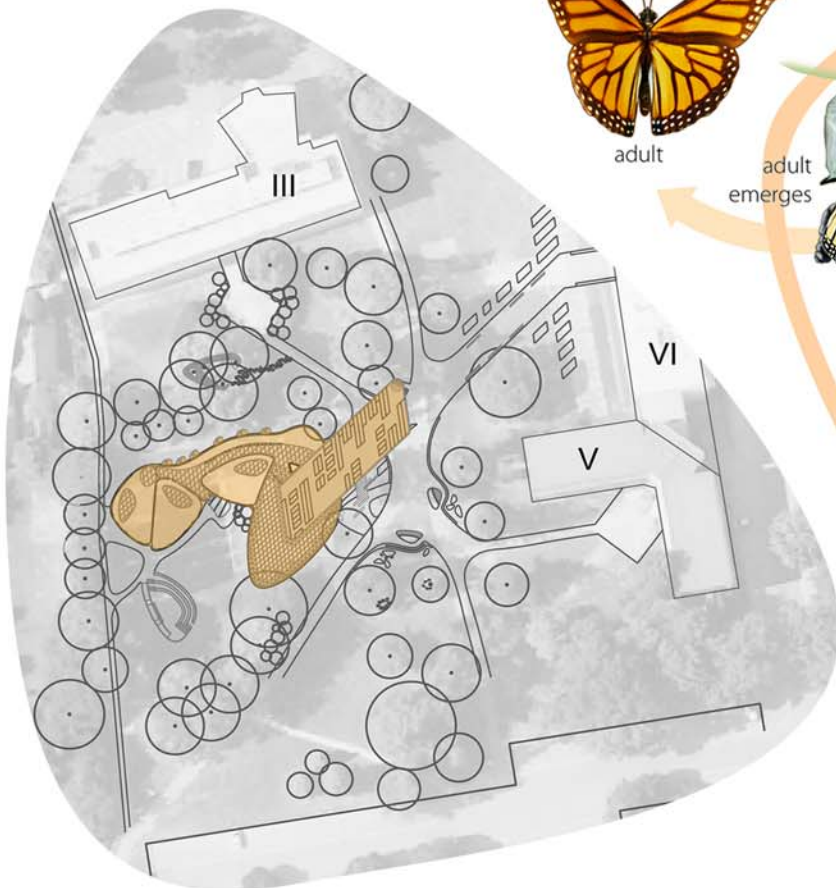
Title of the project	School of Landscape Architecture - Building and Landscape Concept Design
Authors	Andreja Benčić
Title of the course	Architectural Design - 2nd year of Landscape Architecture, elective course
Academic year	2013 / 2014
Teaching staff	prof. art. Stanko Stergaršek, architect / Iva Rechner Dika, PhD landscape architect
Department / Section / Program of belonging	Department of Ornamental Plants, Landscape Architecture and Garden Art
University / School	University of Zagreb / Faculty of Agriculture / School of Landscape Architecture - Zagreb

Short description of the project

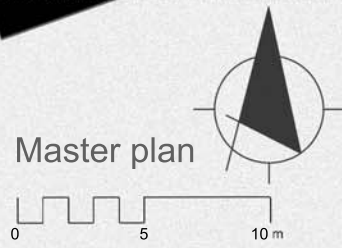
This project is based on a spatial program for school of landscape architecture building. Input information for defining a project program is based on present conditions (number of students and teaching staff) as well as their wishes. Designing simultaneously the building and landscape and in the same time, connecting indoor space with outdoor spaces is something what every LA student should experience.

The site for this project is located at the Faculty of Agriculture in Zagreb, Croatia. Currently greenhouse isn't in daily use and it is decaying, but as a greenhouse in the middle of campus, it became a symbol.

In this project the greenhouse serves as a community area for all students, with additional two floors of classrooms, computer classrooms, model classrooms, and "flying" teacher offices, which at the same time creates a space under it, for being outside even under bad weather conditions. Surrounding landscape is designed for different student activities, open-door classroom, benches and other elements where students can contemplate, socialize, encounter other people, work and have fun. Architecture of the school is modern, bionic and futuristic, as well as low energy and environment friendly, with a lot of window surfaces, vertical gardens, modern materials (solar panels and hydrophobic surfaces). Bionic architecture is representing all stages of butterfly growth, and like every good project, it started with an idea (egg), progressing as a caterpillar, cocooned in the mid-time and raised like a butterfly at the end.



Croatia
 University of Zagreb / Faculty of Agriculture / School of Landscape Architecture - Zagreb
 2013 / 2014
 School of Landscape Architecture - Building and Landscape Concept Design
 Andreja Benčić



Wooden Platform for studying and recreation

Offices for professors with a roof garden, set on columns, beneath which there is a covered area

Hall entrance, intended for meetings, exhibitions

Roof plan

Floor plan

Drawing Room

Model Classroom

Classroom

Outdoor terrace with a variety of residential structures and decorative flowerbed

Flowerbeds

central square, the main node of all movement on campus

Different types of benches and tables for studying and socializing

Common area, Living Room, Library, Cafe, relaxation, Social Events etc.

Ground plan

Outdoor Classroom, Stands, Cinema under the Stars

Sculptural Furniture

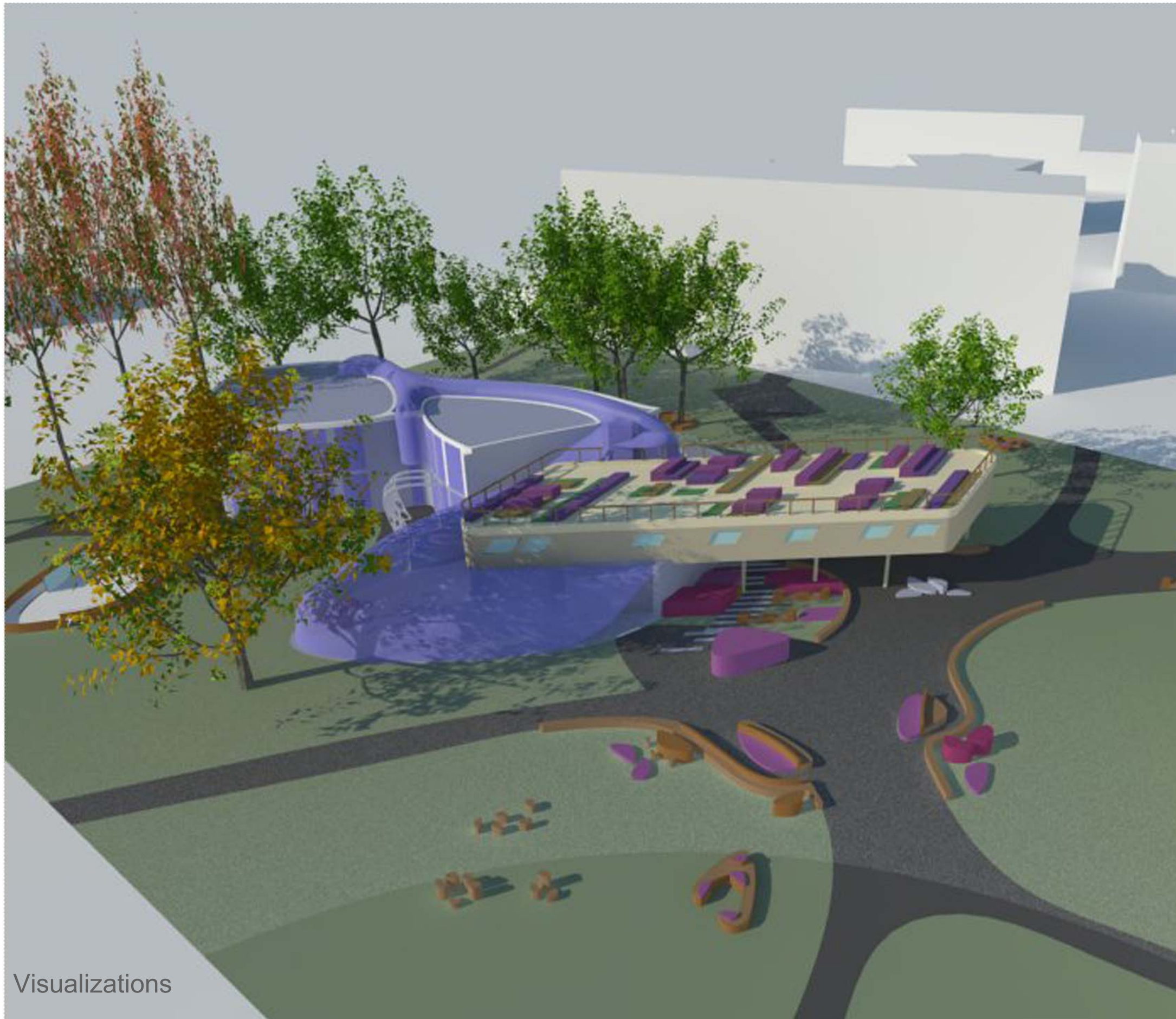


Intersections

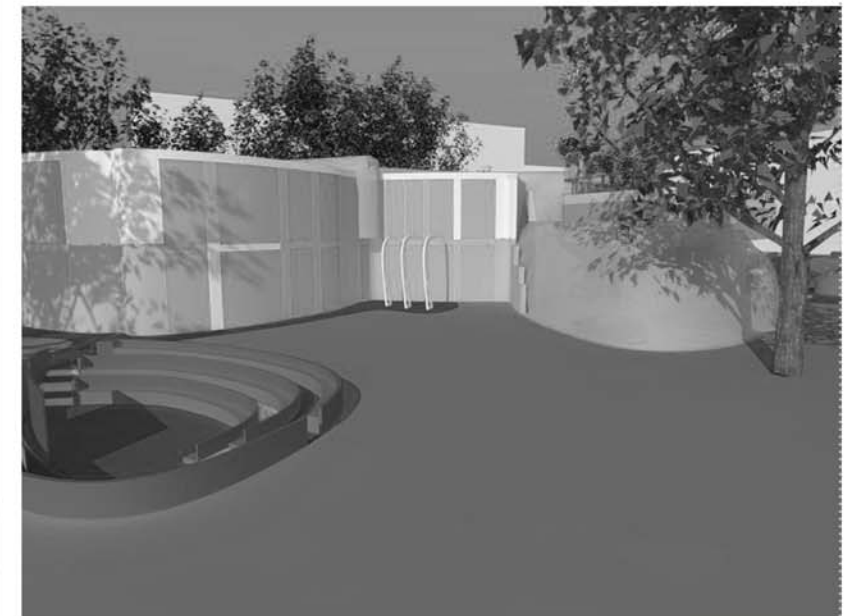
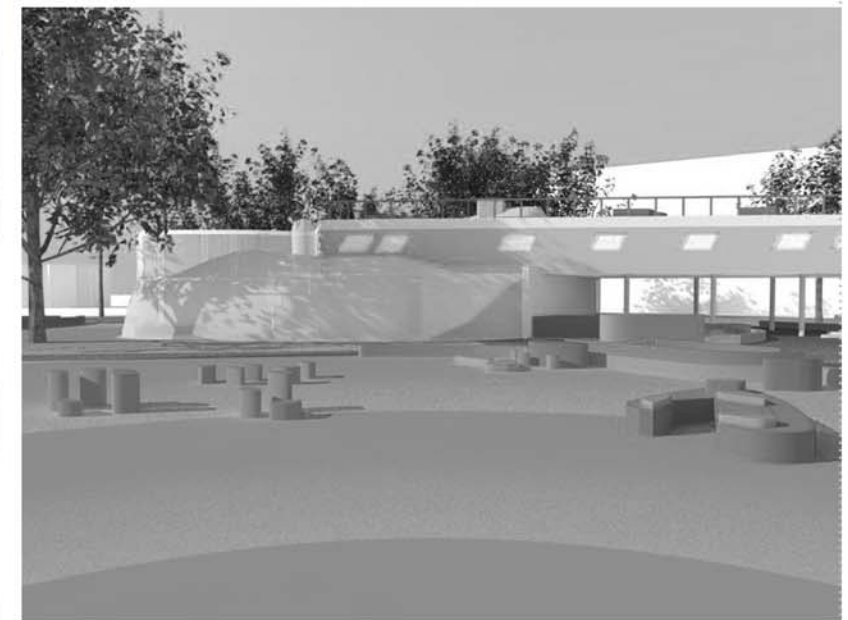
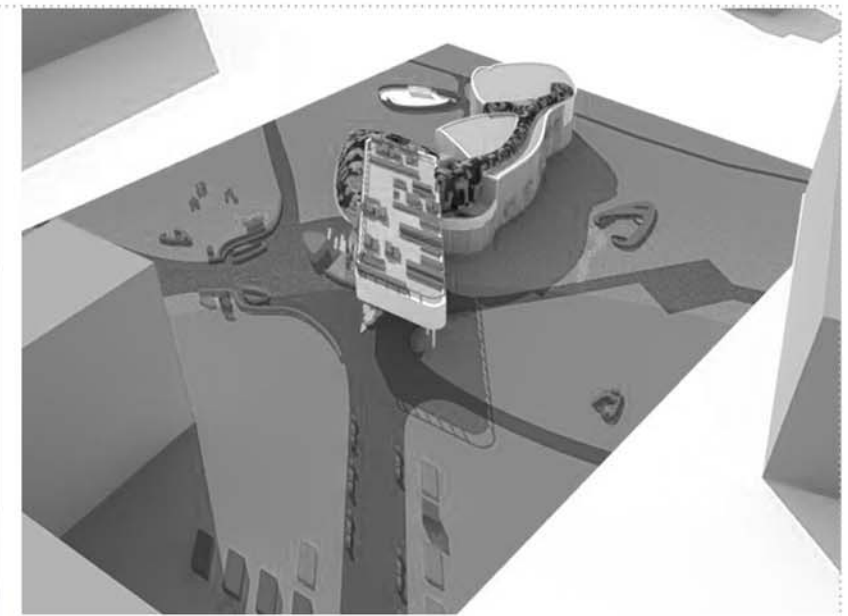


Croatia
 University of Zagreb / Faculty of Agriculture / School of Landscape Architecture - Zagreb
 2013 / 2014
 School of Landscape Architecture - Building and Landscape Concept Design
 Andreja Benčić





Visualizations



Croatia
University of Zagreb / Faculty of Agriculture / **School of Landscape Architecture - Zagreb**
2013 / 2014
School of Landscape Architecture - Building and Landscape Concept Design
Andreja Benčić

8**Biennial
Internacional
de Paisatge****International Biennial
of Landscape Architecture****September 2014
Barcelona
25, 26 & 27 september****VIII European Biennial of Landscape Architecture**ETSAB - Escola Tècnica Superior
d'Arquitectura de Barcelona
Avenida Diagonal, 649
08028 Barcelona - Spain
T: +34.93 5520842; +34. 93 4016411
Contact: Anna Cavallerobiennial.paisatge@upc.edu
<http://www.coac.net/landscape>

A LANDSCAPE FOR YOU

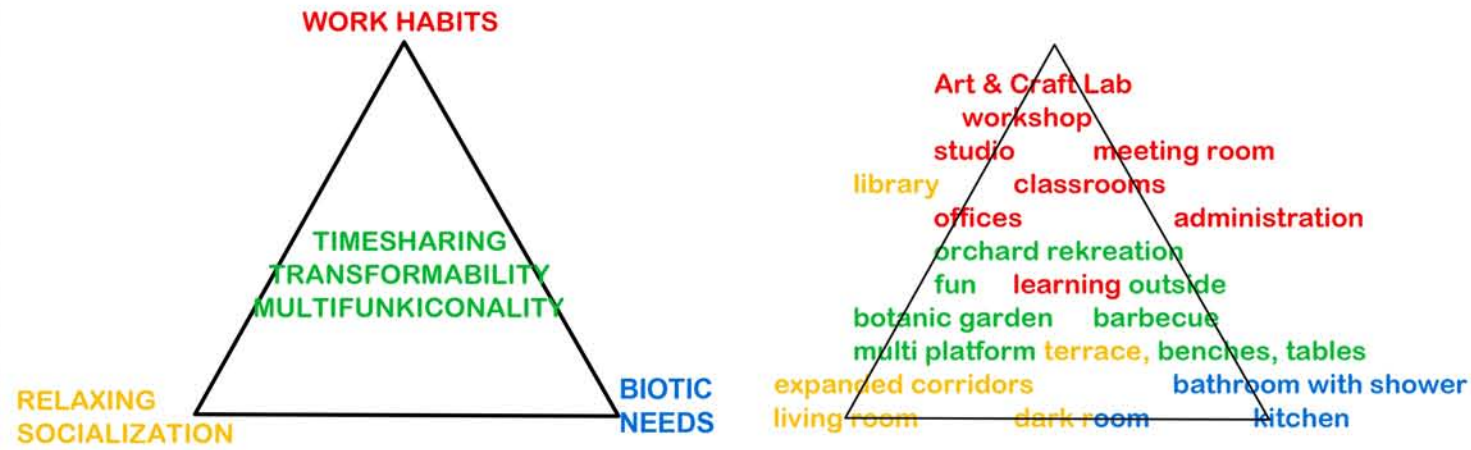
TECHNICAL DOSSIER

Title of the project	School of Landscape Architecture - Building and Landscape Concept Design
Authors	Ivana Bunjak-Pajdek
Title of the course	Architectural Design - 2 nd year Ms Landscape Architecture, elective course
Academic year	2013 / 2014
Teaching staff	prof. art. Stanko Stergaršek, architect / Iva Rechner Dika, PhD landscape architect
Department / Section / Program of belonging	Department of Ornamental Plants, Landscape Architecture and Garden Art
University / School	University of Zagreb / Faculty of Agriculture / School of Landscape Architecture - Zagreb

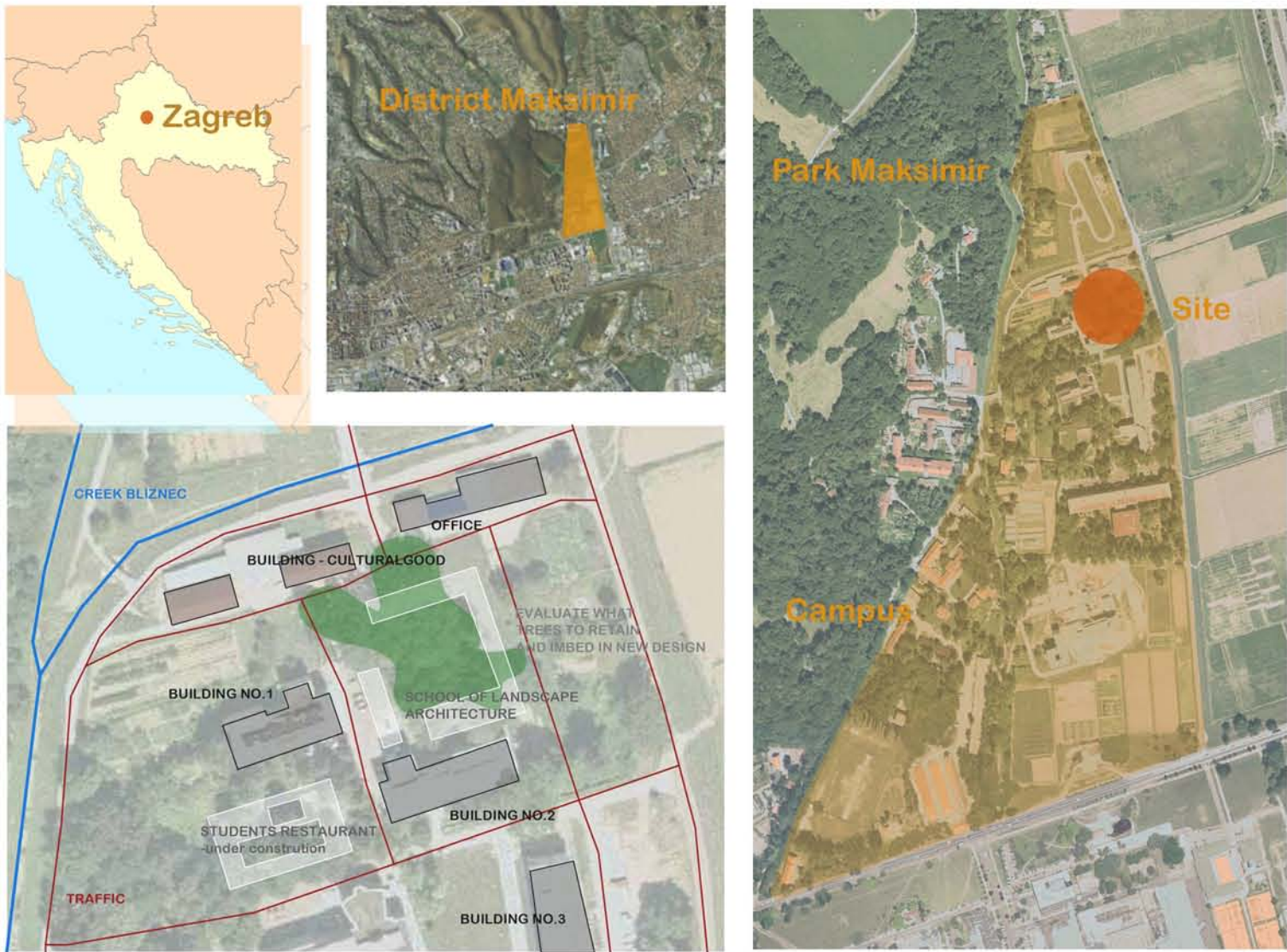
Short description of the project

The emphasis of this project was to design the School of Landscape Architecture: building and landscape around it. The main assignment was defining the functional programme and content for School of Landscape Architecture, that meets the distinct needs at landscape architects education. This kind of education sometimes requires staying at School during the whole day and sometimes night. That was the main reasoning behind philosophy of this project, that was inspired by the triangle of students life. Students life triangle has three poles (good grades, social life and enough sleep), between which you can choose only two. That was the starting point, where the pole with "good grades" symbolized needs like learning, drawing, creating, while the pole "enough sleep" was considered as biotic needs, and "social life" symbolized students free time. This philosophy is visible in the layout building and designed landscape around it. Central point of the triangle, at layout - central atrium, is the point where all needs or poles meet: learning, relaxing and having fun. Likewise, creating the building in U-form allowed redistributing three different categories of needs (mentioned before) and space (classrooms, Art&Craft Lab, library, offices, living room, kitchen, multifunctional expanded corridors, etc.), leaving the central space free for the atrium garden. The garden was designed considering existing vegetation and preserving old trees. Structures for outdoor learning, workshops and projects, relaxing and socialization such as: "path of generations", "floating" terrace, "sculptural" garden of materials, botanical garden etc. were added. The whole process of making conceptual design of the school building and garden were simultaneous, meaning that, building and landscape were designed depending on each other, at the same time.

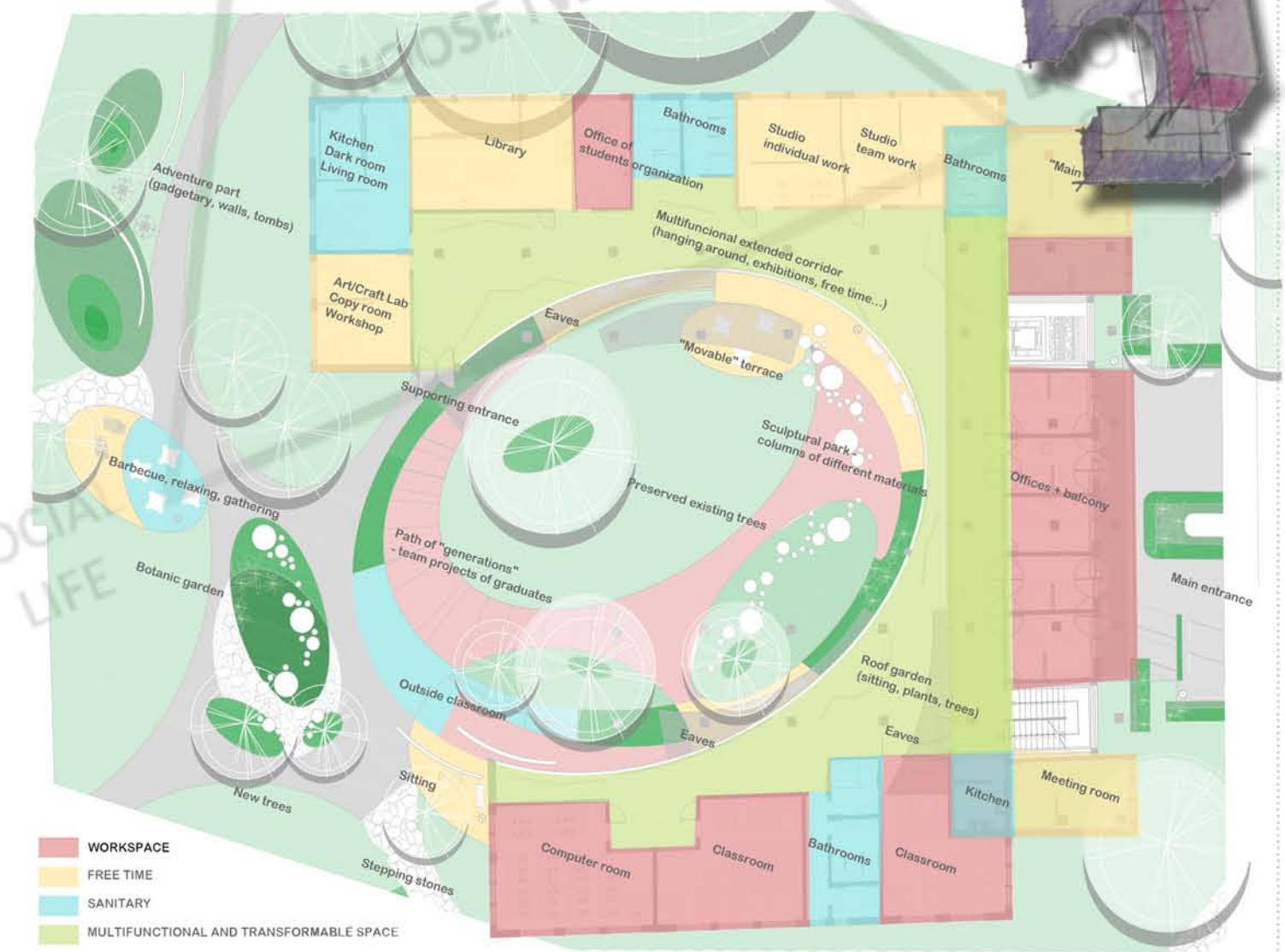
PROJECTUAL PROCESS



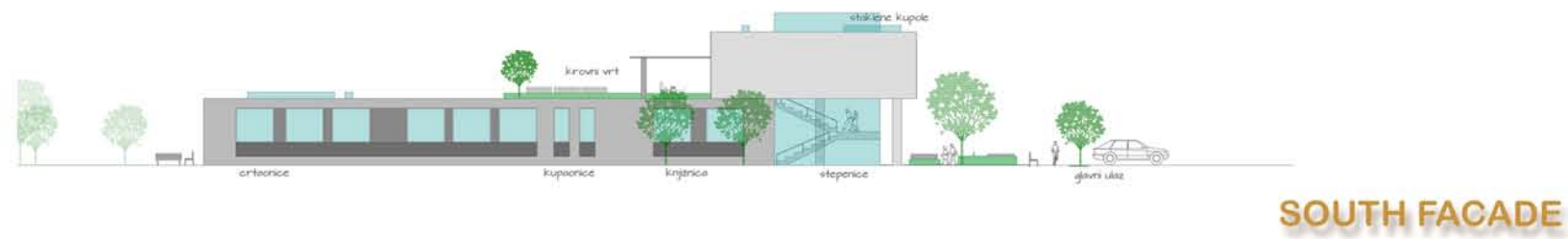
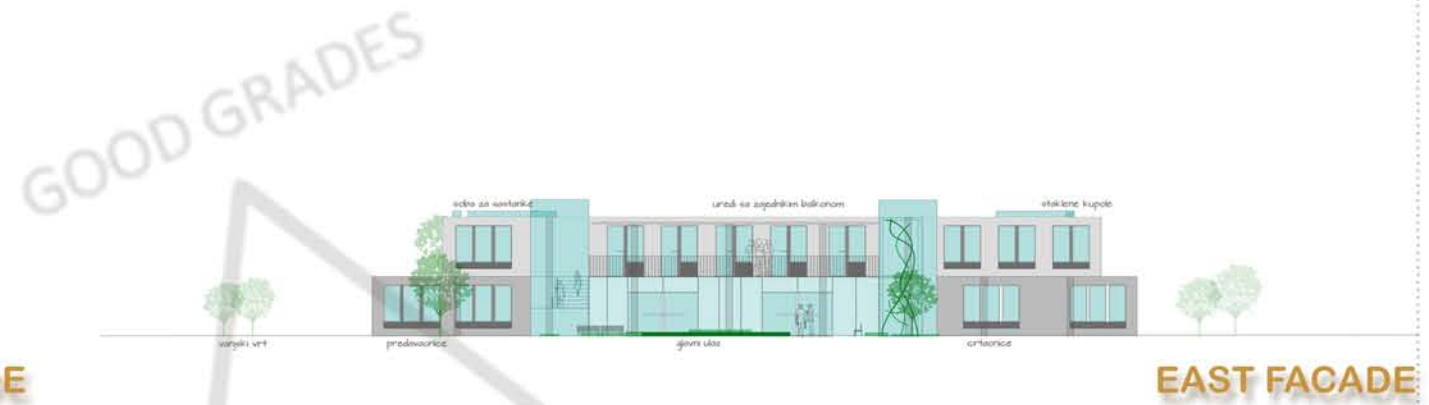
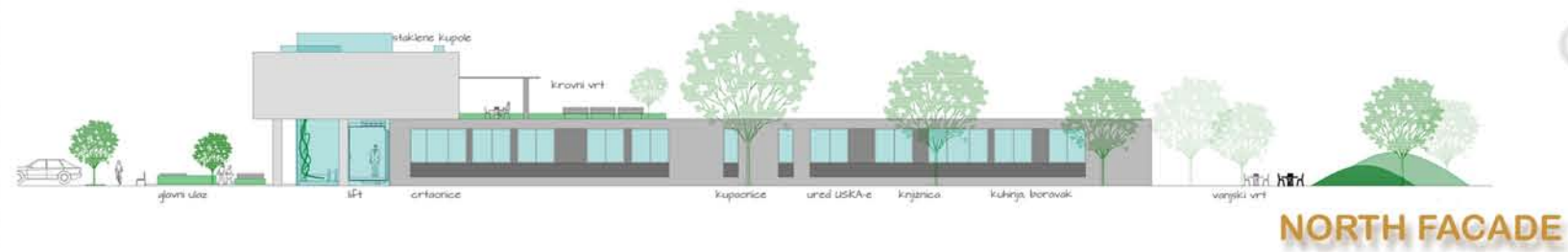
LOCATION & SITE



GENERAL SCHEME



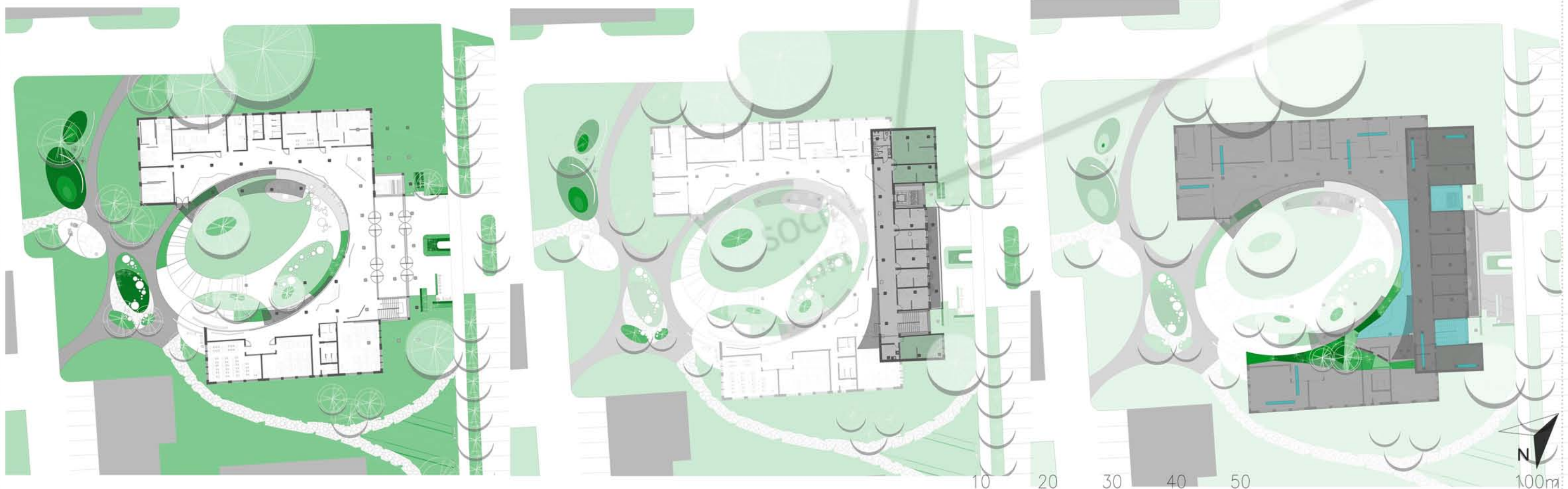
SECTIONS - FACADES



GROUND FLOOR PLAN

FIRST FLOOR PLAN

ROOF PLAN



Croatia
 University of Zagreb / Faculty of Agriculture / School of Landscape Architecture - Zagreb
 2013 / 2014
 School of Landscape Architecture - Building and Landscape Concept Design
 Ivana Bunjak-Pajdek



RENDERS



Croatia
University of Zagreb / Faculty of Agriculture / **School of Landscape Architecture - Zagreb**
2013 / 2014
School of Landscape Architecture - Building and Landscape Concept Design
Ivana Bunjak-Pajdek



8
**Biennial
Internacional
de Paisatge**

**International Biennial
of Landscape Architecture**

**September 2014
Barcelona
25, 26 & 27 september**

VIII European Biennial of Landscape Architecture

ETSAB - Escola Tècnica Superior
d'Arquitectura de Barcelona
Avenida Diagonal, 649
08028 Barcelona - Spain
T: +34.93 5520842; +34. 93 4016411
Contact: Anna Cavallero

biennial.paisatge@upc.edu
<http://www.coac.net/landscape>

A LANDSCAPE FOR YOU

TECHNICAL DOSSIER

Title of the project	School of Landscape Architecture 'Stream' - Building and Landscape Concept Design
Authors	Nikolina Malbaša
Title of the course	Architectural Design - 2 nd year Ms Landscape Architecture, elective course
Academic year	2013 / 2014
Teaching staff	prof. art. Stanko Stergaršek, architect / Iva Rechner Dika, PhD landscape architect
Department / Section / Program of belonging	Department of Ornamental Plants, Landscape Architecture and Garden Art
University / School	University of Zagreb / Faculty of Agriculture / School of Landscape Architecture - Zagreb

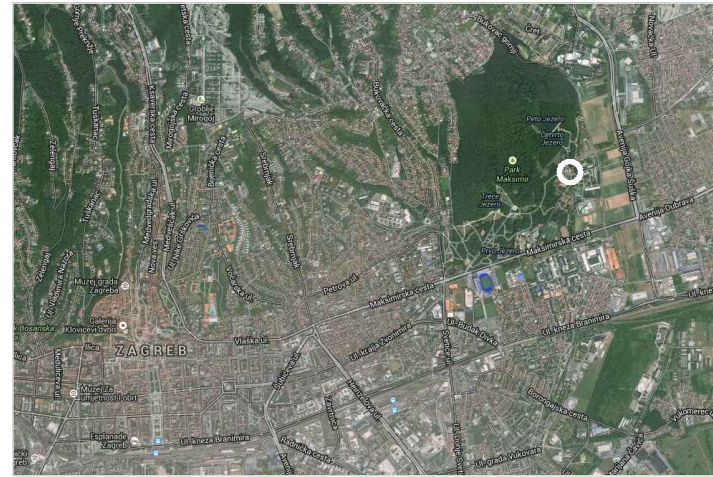
Short description of the project

Student assignment was to create our own concept for the school of landscape architecture and design a building, educational institution, with outdoor space. Basic idea for the design was composition of the square, circle and triangle. Significant spiritual component is visible through philosophy that square represents concentration, circle represents emotion and triangle represents intellect. The main elements that make this building are rectangles, mutually arising from one form, their intersecting in one corner is the central residential area that directs the movement of the other linear parts (represented by a circle). Connecting the end points of the building we get to the base of the triangle which unites the story about the importance of intellect, will and emotions in a process of education. Looking at the structure in cross section, elongated character of the building is interrupted by three elements that are vertically prominent. Also, the design of the building entailed the landscape design of the outer area. The basis for the landscape design was geometric with organic forms and patches with ornamental grasses and plants. There is a space within the forest where is possible to organize informal outdoor classes and in the central space there are sculptures and fountains which make this space more formal. The area along the stream is complemented by rocks and water plants on slopes. Landscape design is continued in the interior of the building, garden atrium is visible from the main entrance, while the side entrance provides a view on the vertical garden.

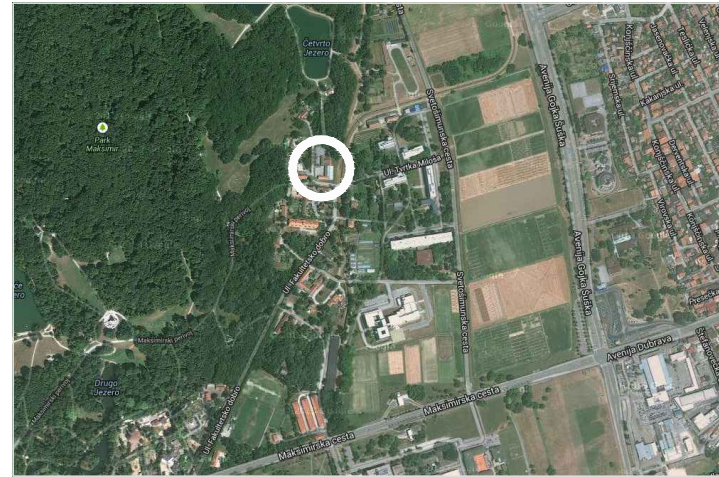
location



SOURCE: [HTTP://WWW.MOVEONEINC.COM/](http://www.moveoneinc.com/)



SOURCE: [HTTP://KARTAZAGREBA.NET/](http://kartazagreba.net/)

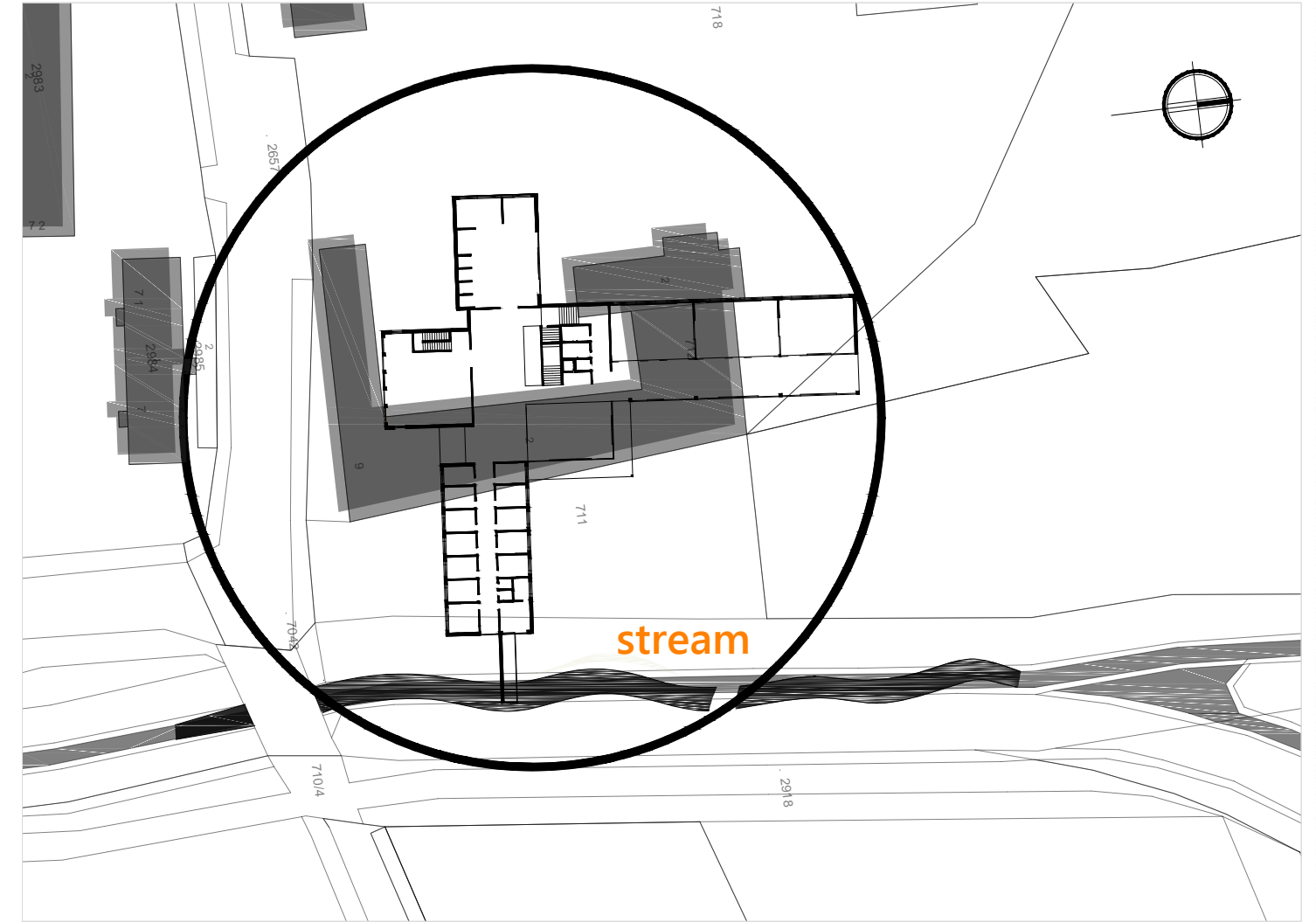


SOURCE: [HTTP://KARTAZAGREBA.NET/](http://kartazagreba.net/)



SOURCE: [HTTP://GEOPORTALDGU.HR/](http://geoportaldgu.hr/)

site



SOURCE: EXTRACT FROM THE CADASTRAL PLAN

photographs of location



SOURCE: [HTTPS://WWW.GOOGLE.HR/MAPS/](https://www.google.hr/maps/)



SOURCE: [HTTPS://WWW.GOOGLE.HR/MAPS/](https://www.google.hr/maps/)

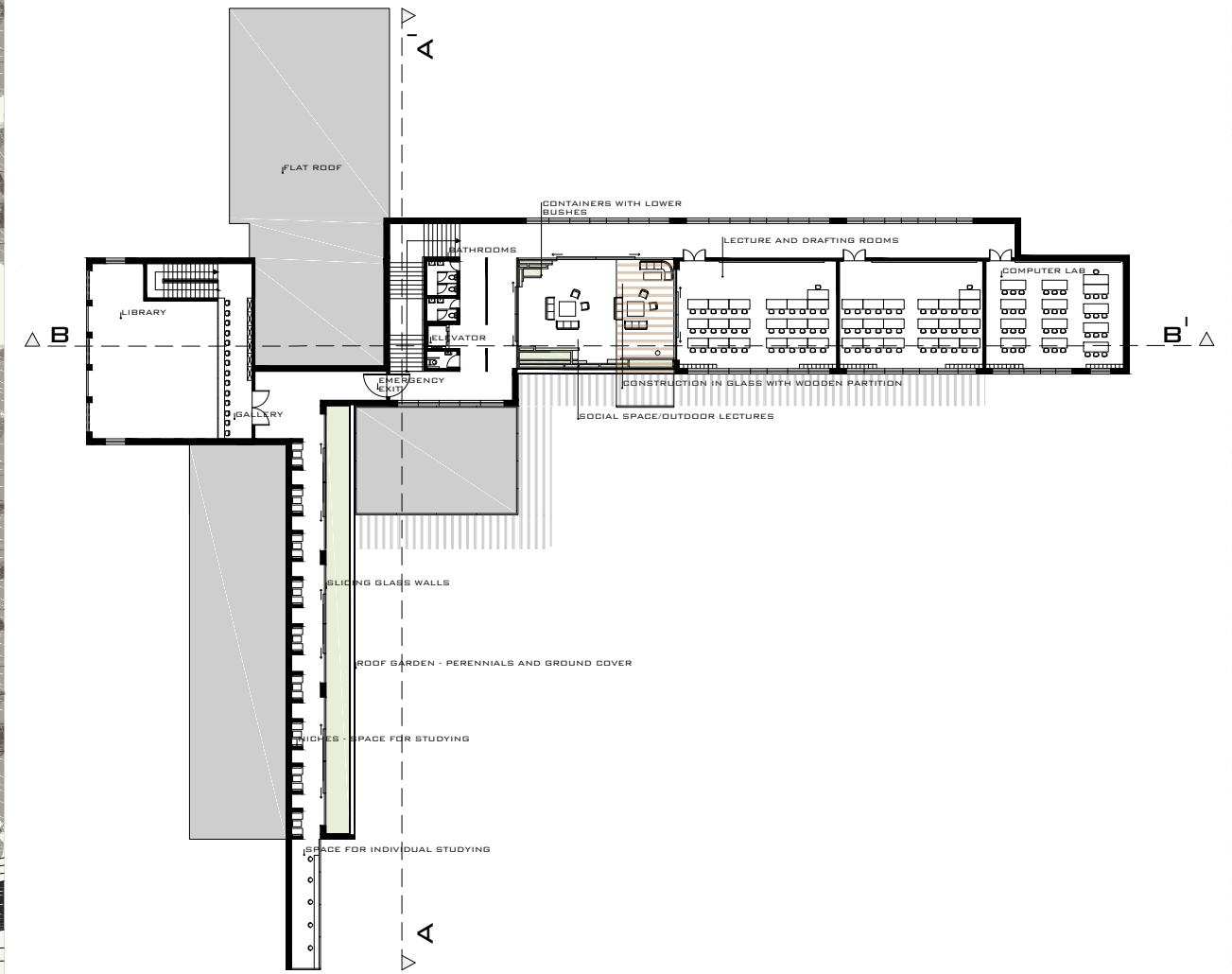


Croatia
 University of Zagreb / Faculty of Agriculture / School of Landscape Architecture - Zagreb
 2013 / 2014
 School of Landscape Architecture 'Stream' - Building and Landscape Concept Design
 Nikolina Malbaša

ground floor plan



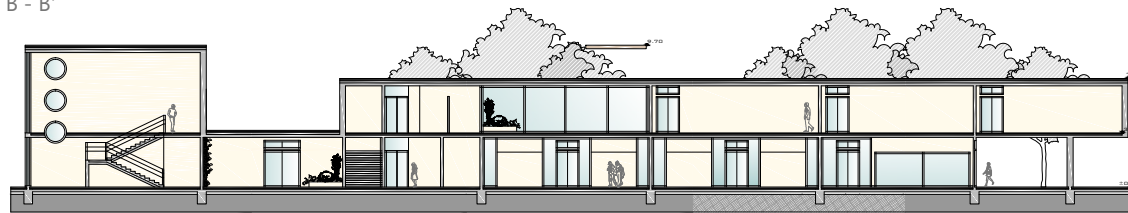
first floor plan



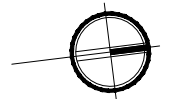
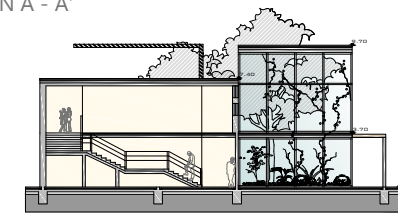
sections



SECTION B - B'



SECTION A - A'



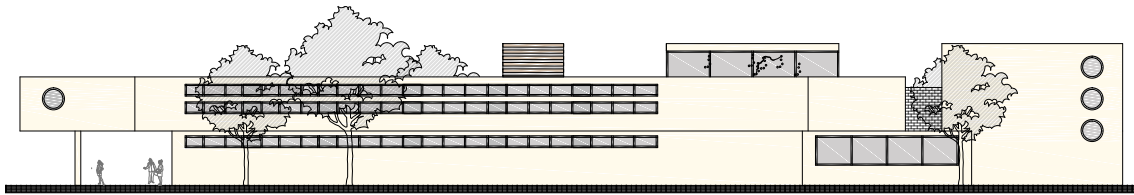
Croatia
 University of Zagreb / Faculty of Agriculture / School of Landscape Architecture - Zagreb
 2013 / 2014
 School of Landscape Architecture 'Stream' - Building and Landscape Concept Design
 Nikolina Malbaša

facades

FACADE - SOUTH



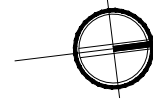
FACADE - WEST



FACADE - NORTH



FACADE - EAST



renders



Croatia
University of Zagreb / Faculty of Agriculture / School of Landscape Architecture - Zagreb
2013 / 2014
School of Landscape Architecture 'Stream' - Building and Landscape Concept Design
Nikolina Malbaša



International Biennial
of Landscape Architecture

September 2014
Barcelona
25, 26 & 27 september

VIII European Biennial of Landscape Architecture

ETSAB - Escola Tècnica Superior
d'Arquitectura de Barcelona
Avenida Diagonal, 649
08028 Barcelona - Spain
T: +34.93 5520842; +34. 93 4016411
Contact: Anna Cavallero

biennial.paisatge@upc.edu
<http://www.coac.net/landscape>

A LANDSCAPE FOR YOU

TECHNICAL DOSSIER

Title of the project	School of Landscape Architecture - Building and Landscape - Concept Design
Authors	Ana Žmire
Title of the course	Architectural Design - 2 nd year Ms Landscape Architecture, elective course
Academic year	2013 / 2014
Teaching staff	prof. art. Stanko Stergaršek, architect / Iva Rechner Dika, PhD, landscape architect
Department / Section / Program of belonging	Department of Ornamental Plants, Landscape Architecture and Garden Art
University / School	University of Zagreb / Faculty of Agriculture / School of Landscape Architecture - Zagreb

Short description of the project

The main goal of this project was to define a spatial/functional program for the school of landscape architecture building and to design it together with the landscape around it, that both meet the needs of present and future generations of students and teachers.

This self-sustainable school consists of two square buildings, one for teachers and one for students, connected with two elliptical glass domes.

Landscape design main idea emerged from the site's historical matrix with the ellipse surrounding the school that was reintroduced to achieve the reminiscence of the original design which disappeared over time. The vista towards the small chapel of St. Juraj is reopened through the passage between the two school buildings.

The connection between the building and the ellipse was achieved through 1,5 x 1,5 meter raster that spreads from the northwest to the southeast, at certain points passing through the school buildings and over them. To achieve a connection between modern and historical design a stripe of solar panels is placed from Haulik's Summer House through the ellipse, spilling into 1,5 x 1,5 meter squares when it reaches the raster around the school, continuing again in a straight line into the forest behind the school building. The landscape surrounding the school mainly consists of the existing dense forest and the "green classroom" that is placed into the raster and serves as a place for students to learn, design, build and maintain their environment in a sustainable manner, but also relax and spend their free time.

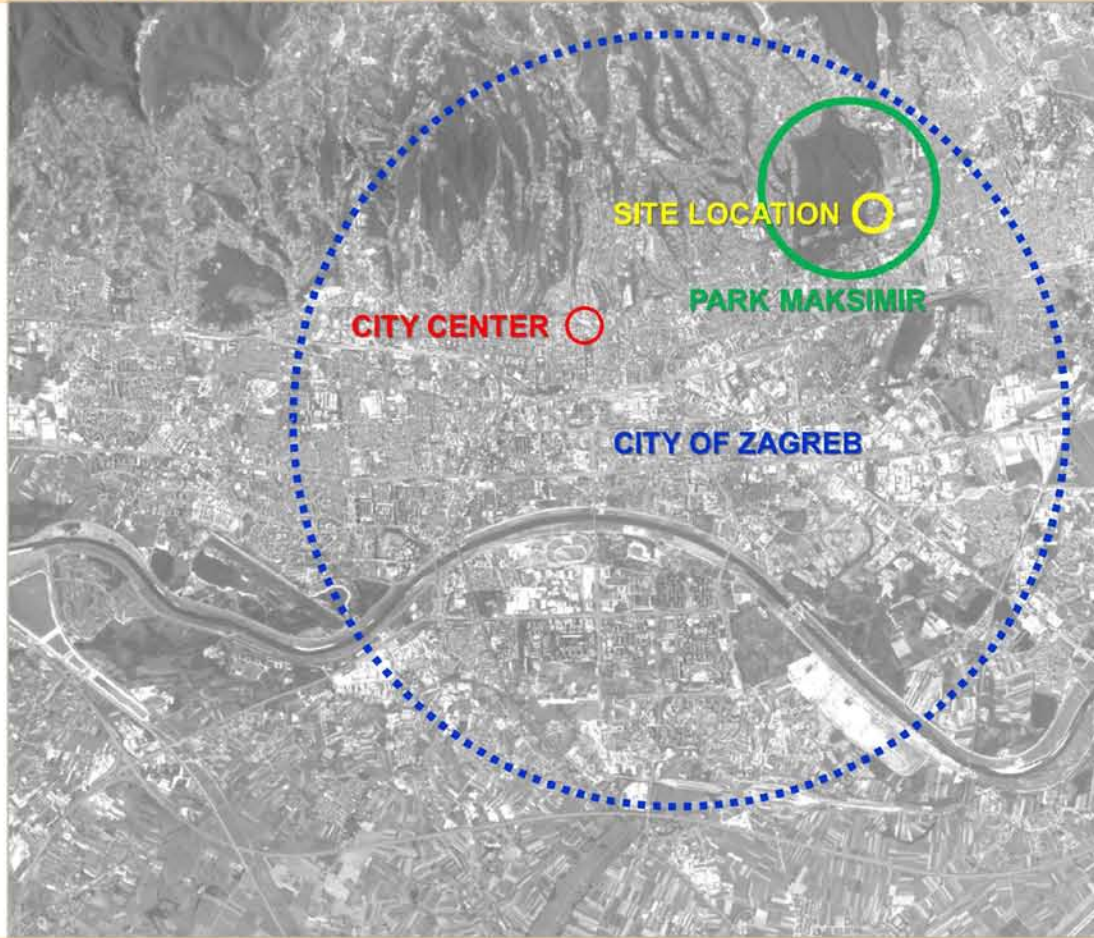
For further information you can call the office of the **Màster d'Arquitectura del Paisatge - DUOT - UPC**

Tel: +34 93-552 08 42 o +34 93-401 64 11

Contact via email at: biennial.paisatge@upc.edu

Consult the Web page at: <http://www.coac.net/landscape>

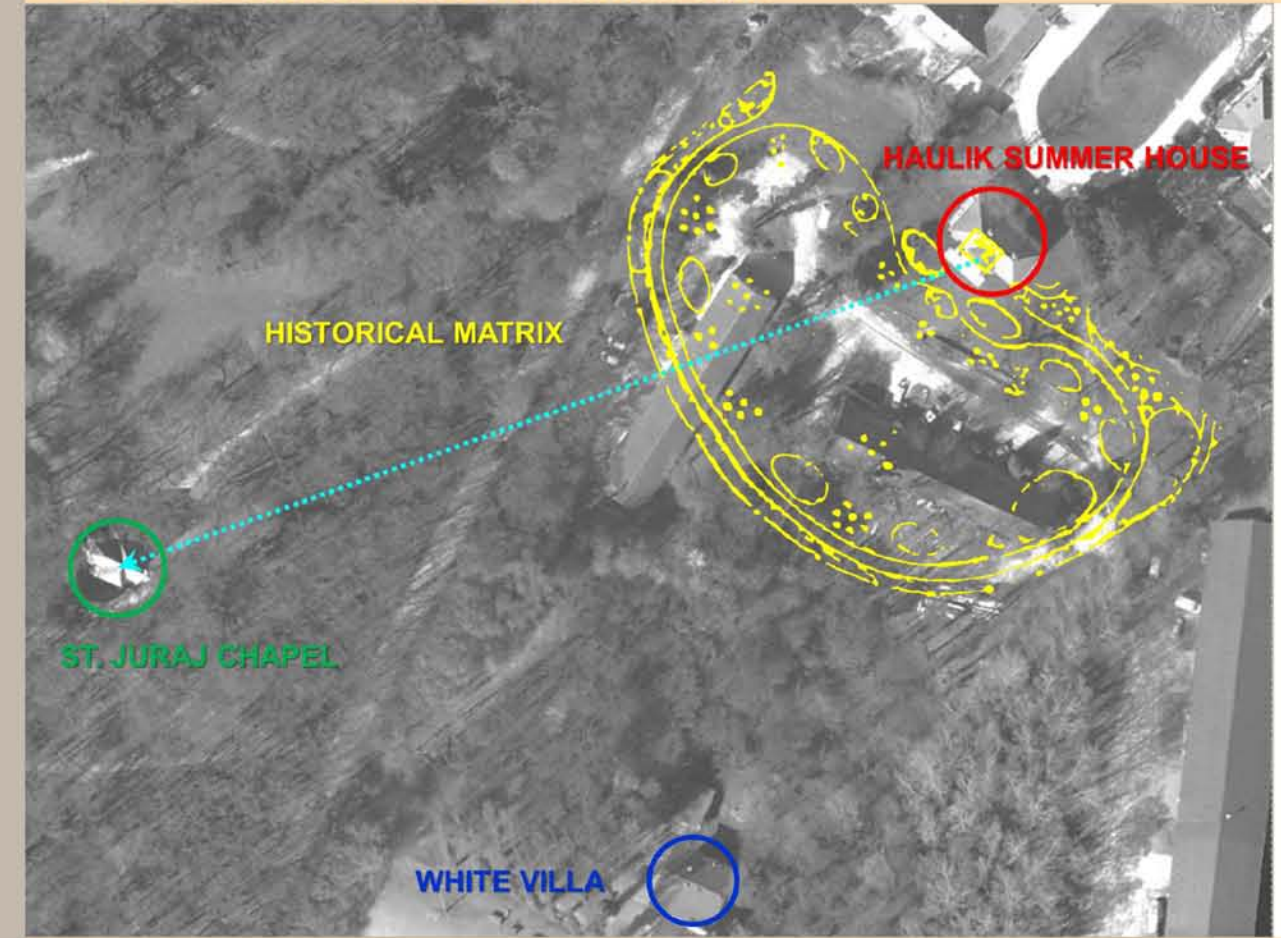
SITUATION PLAN



LOCATION PLAN



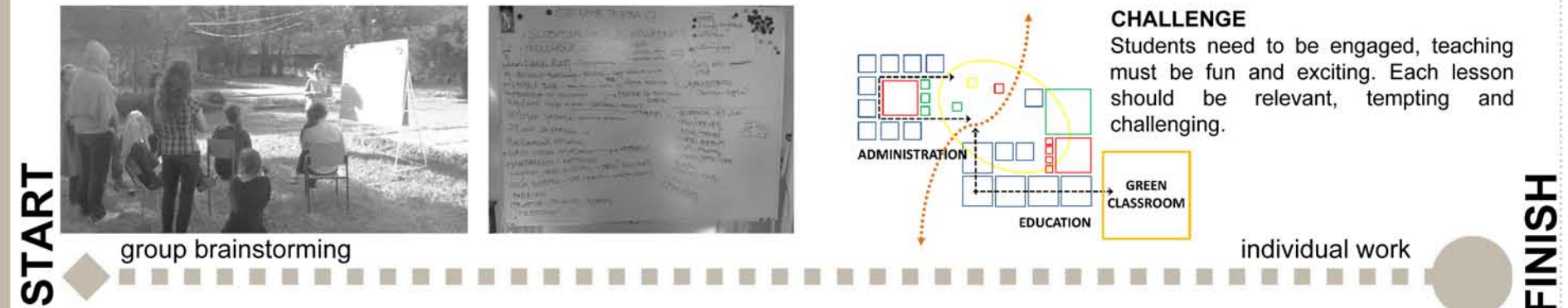
SITE'S HISTORICAL MATRIX



PHOTOGRAPHS OF THE SITE



PROJECT PROCESS & PHILOSOPHY



Croatia
University of Zagreb / Faculty of Agriculture / School of Landscape Architecture - Zagreb
2013 / 2014
School of Landscape Architecture - Building and Landscape - Concept Design
Ana Žmire

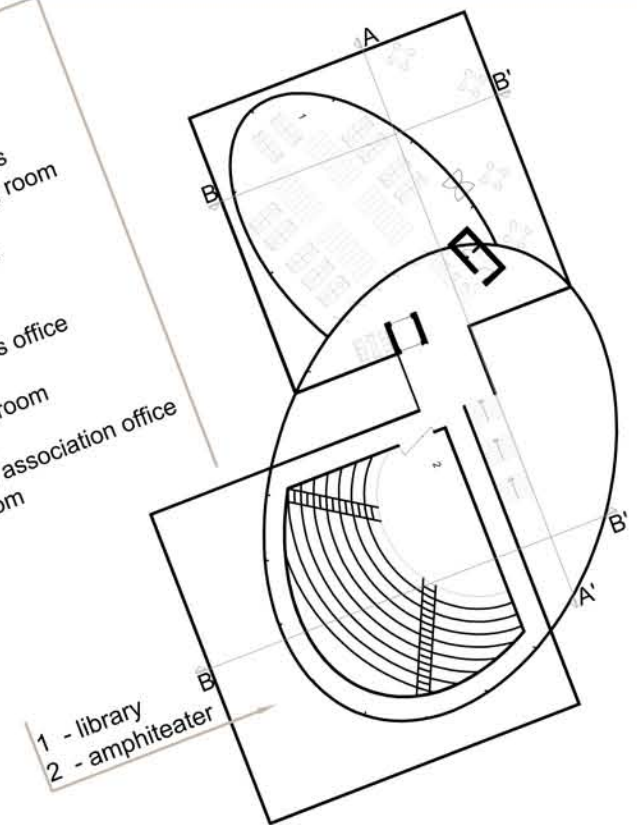


Croatia
 University of Zagreb / Faculty of Agriculture / School of Landscape Architecture - Zagreb
 2013 / 2014
 School of Landscape Architecture - Building and Landscape - Concept Design
 Ana Žmire

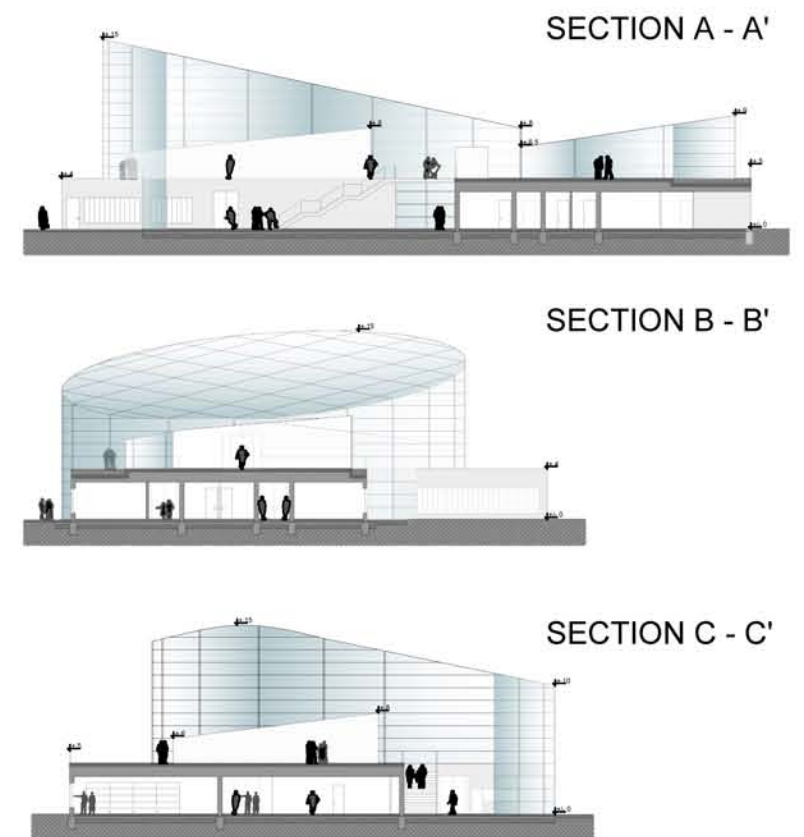


1st FLOOR PLAN

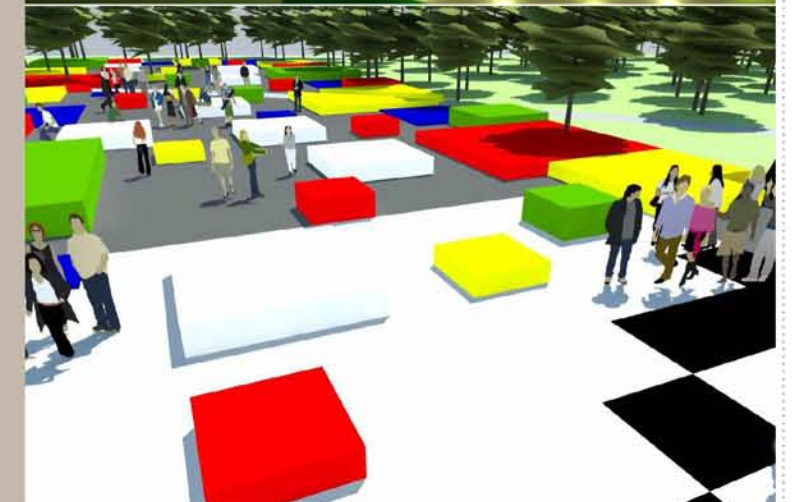
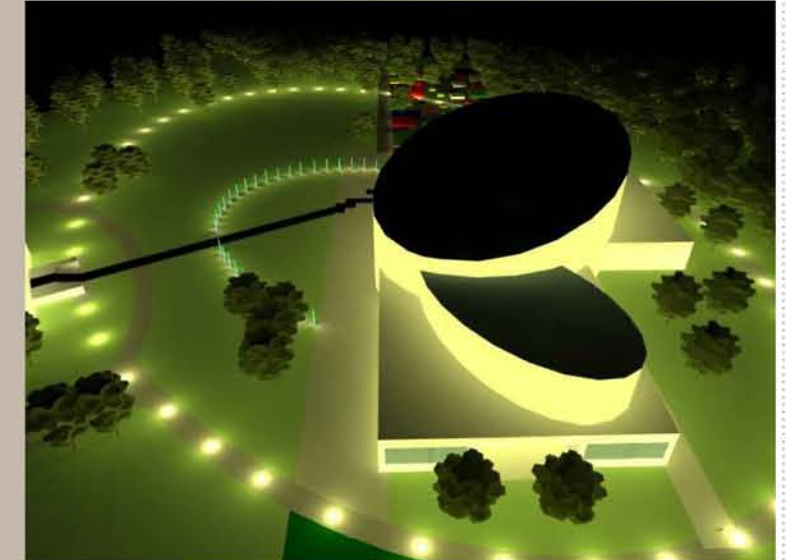
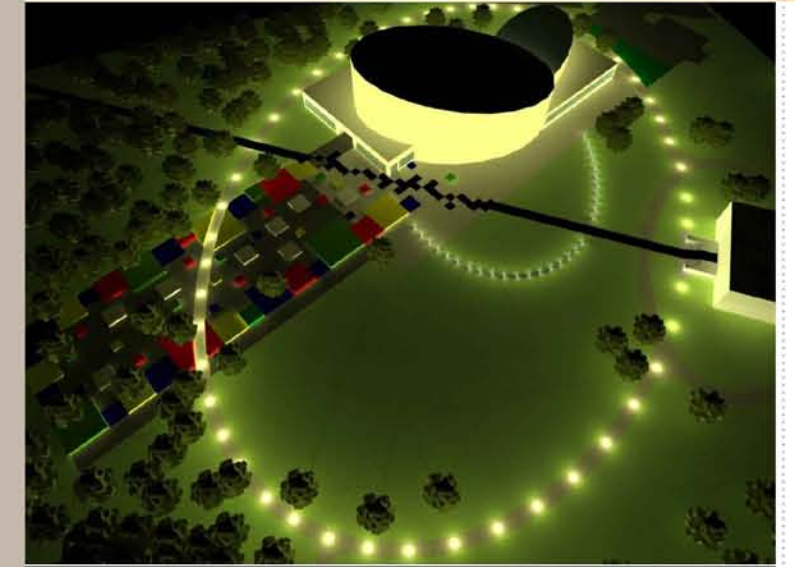
- 1 - meeting room
 - 2 - office for 1 person
 - 3 - reception desk
 - 4 - loggia
 - 5 - office for 2 persons
 - 6 - kitchen and living room
 - 7 - restroom
 - 8 - secretary office
 - 9 - storage
 - 10 - lift
 - 11 - headmasters office
- A - computer room
 B - restroom
 C - students association office
 D - classroom
 E - loggia



SECTIONS



3D VISUALIZATIONS



Croatia
University of Zagreb / Faculty of Agriculture / **School of Landscape Architecture - Zagreb**
2013 / 2014
School of Landscape Architecture - Building and Landscape - Concept Design
Ana Žmire